

IZERVAY is the most prescribed choice for patients new to geographic atrophy (GA) treatment*

izervay[®]
(avacincaptad pegol
intravitreal solution) 2 mg



*Based on Symphony data from 3/24-12/25.
May not represent entire patient population.

SLOW GA

with IZERVAY

IZERVAY is proven to slow GA progression, which could help preserve your vision longer



Listen to an audio version of this brochure. Call: 1-855-IZERVAY (1-855-493-7829)

IZERVAY significantly slowed GA progression by 18% to 35%, compared to those who were not treated, in 2 clinical trials evaluating 624 people with GA.

IMPORTANT SAFETY INFORMATION AND USE

Do NOT receive IZERVAY[®] (avacincaptad pegol intravitreal solution) if you:

- Have an infection in or around your eye
- Have active swelling in or around your eye that may include pain and redness

Please see Important Safety Information throughout this brochure. [Click here](#) for full Prescribing Information.



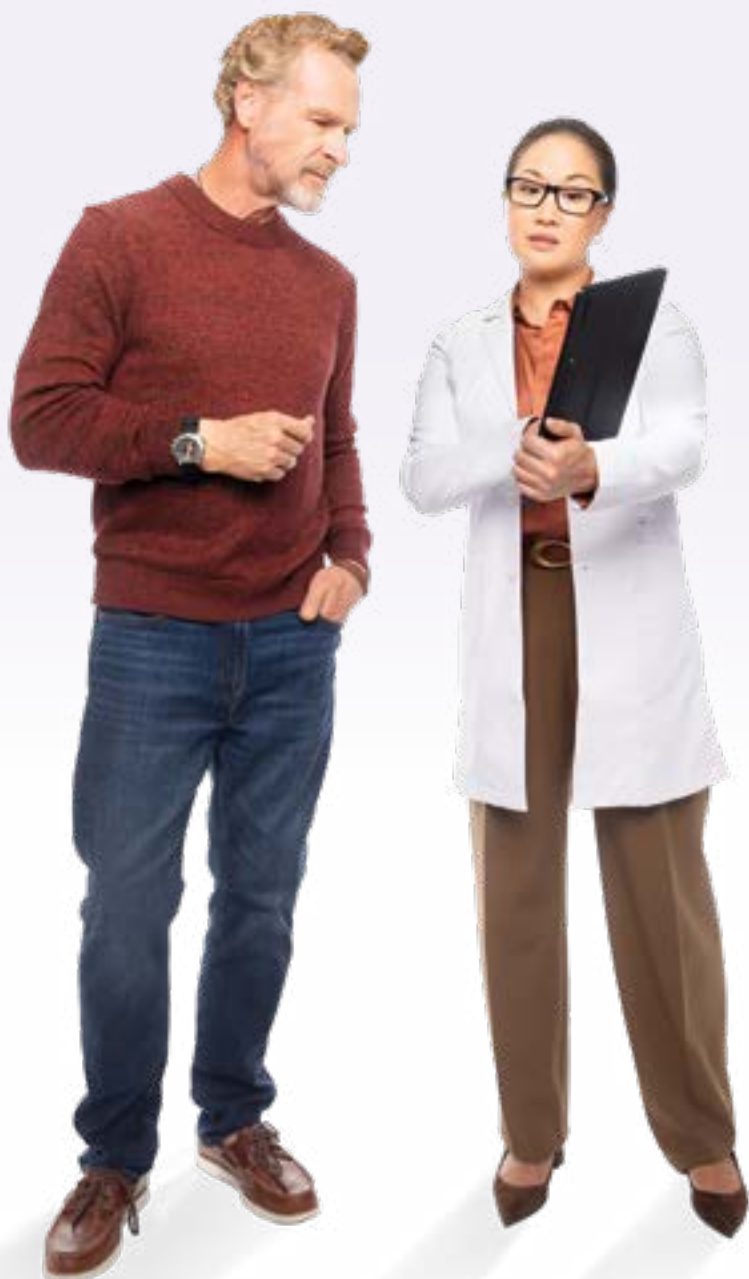
Some people with advanced GA symptoms lose the ability to drive.

IMPORTANT SAFETY INFORMATION (CONT'D)

IZERVAY can cause serious side effects including:

- **Eye Infection and Retinal Detachment:** Eye injections like the one for IZERVAY can cause an eye infection (endophthalmitis) or separation of layers of the retina (retinal detachment).
- **Wet Age-Related Macular Degeneration (AMD):** There is a risk of developing wet age-related macular degeneration (AMD) with IZERVAY. You should report any symptoms (visual distortions such as straight lines seeming bent, deterioration in vision, dark spots, loss of central vision) to your healthcare provider to monitor.

GET STARTED ON YOUR GA TREATMENT JOURNEY



Actor portrayal

We know that living with GA may present challenges, especially with changing vision. You likely have many questions about your GA diagnosis and are wondering how to best move forward **so that you may continue to do what you love for longer.**

In this brochure you will:

- Learn what GA is
- Hear real patient perspectives on living with GA
- See how you can slow GA, which could help preserve your vision for longer with IZERVAY

Patients agree, it's time to treat GA

In a survey, **96%** of those currently taking any GA treatment said they would encourage others to start GA treatment as early as possible.*

Read on to start your GA treatment journey with confidence

*Results from a survey sponsored by Astellas of 101 individuals with self-reported GA who are currently receiving any GA treatment. Data as of September 2025. Participants were compensated for their time.

Please see Important Safety Information throughout this brochure. [Click here](#) for full Prescribing Information.

izervay[®]
(avacincaptad pegol
intravitreal solution) 2 mg



Actor portrayal

YOU ARE NOT ALONE

A GA diagnosis may leave you feeling disconnected, but there are about 1.5 million people in the US living with GA



“At first, I had a lot of questions about GA. I desperately wanted to retain my vision for longer, and it would have been meaningful to know there are others on this journey like me.”

– Gail, real GA patient

Quotes reflect patients' experiences at the time of publication.

IMPORTANT SAFETY INFORMATION (CONT'D)

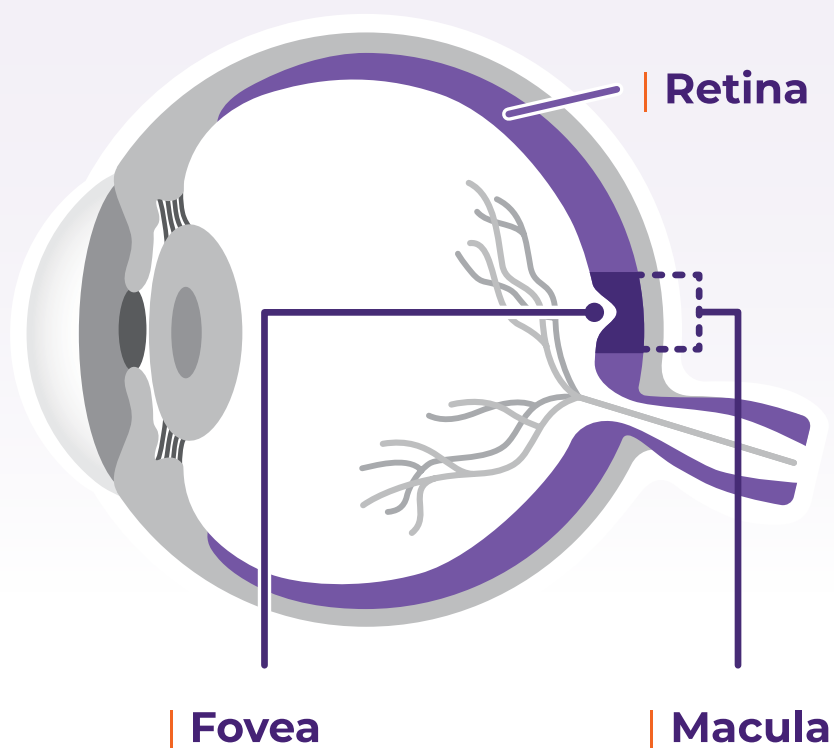
IZERVAY can cause serious side effects including: (cont'd)

- **Increase in Eye Pressure:** IZERVAY may cause a temporary increase in eye pressure after the injection. Your healthcare provider will monitor this after each injection.

GA IS AN ADVANCED FORM OF DRY AMD

GA causes cells in your retina to die, also known as atrophy. This creates patches of dead cells called lesions that cause vision loss

SIDE VIEW OF THE EYE



| Retina

Senses light and converts it into signals that your brain turns into images.

| Macula

The center of your retina that helps you see detail.

| Fovea

Responsible for your sharpest and clearest vision.

GA is a serious condition that
leads to irreversible vision loss

AMD = age-related macular degeneration

Please see Important Safety Information throughout this brochure. [Click here](#) for full Prescribing Information.

izervay[®]
(avacincaptad pegol
intravitreal solution) 2 mg

RECOGNIZE THE SYMPTOMS ASSOCIATED WITH GA

If changes in your vision are impacting your everyday life, it may be a sign that your GA is progressing. Are you experiencing any of these symptoms?



Straight lines appearing wavy



Harder to see at night



Blank spots obscuring central vision



Words are blurry, and colors are washed out

Everyone experiences GA symptoms differently. Images are for illustrative purposes and should not be taken as medical advice. Talk to your doctor if you are experiencing any or multiple of these symptoms.

Even if your symptoms seem mild,
or you currently have no symptoms,
GA may still be progressing

IMPORTANT SAFETY INFORMATION (CONT'D)

IZERVAY can cause serious side effects including: (cont'd)

Call your healthcare provider right away if you have redness of the eye, eye pain, increased discomfort, worsening eye redness, blurred or decreased vision, an increased number of small specks floating in your vision, flashes of light, or increased sensitivity to light.

GA CAN IMPACT YOUR LIFESTYLE AND ROUTINES

GA can progress faster than you think and can begin to interfere with your routine and independence



67%

of people with GA in both eyes lost the ability to drive in 1.6 years*



~2 out of 3

patients struggle to do household chores like deep cleaning their house and preparing complex meals independently†

Treating as soon as you are diagnosed with GA can help you slow down the disease, which **could help preserve your vision for longer**

*Analysis of EMR database in the United Kingdom, including 1901 patients with bilateral GA (GA in both eyes). 1.6 years represents the median (Interquartile Range: 0.7-2.7 years).

†These data from the MOSAIC study survey represent the results of 102 patients from the US ≥60 years with a self-reported GA diagnosis in at least 1 eye.

Please see Important Safety Information throughout this brochure. [Click here](#) for full Prescribing Information.

izervay[®]
(avacincaptad pegol
intravitreal solution) 2 mg

GA CAN PROGRESS UNPREDICTABLY AND FASTER THAN YOU THINK

In as few as 2.5 years, GA can spread to the fovea, where vision is sharpest and clearest*†

BACK VIEW OF THE EYE

Fovea GA lesion



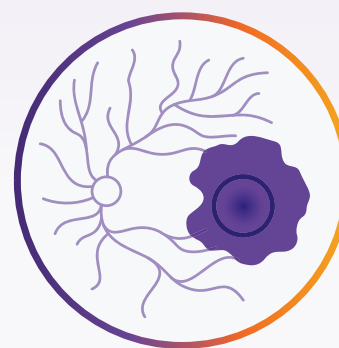
Early onset

Lesions grow and retinal cells are damaged.



GA progression†

Lesions grow larger and get closer to the fovea.



Severe vision loss

When lesions reach the fovea, it can lead to severe vision loss.



I want to maintain my eyesight for as long as possible, and I felt a real sense of urgency to find a treatment that can slow GA and may help that.”

– Ken, real GA patient

*Median time since diagnosis in an analysis of 181 patients with GA.

†GA progression is different for everyone. Some people may experience slower or faster GA progression and changes in vision.

IMPORTANT SAFETY INFORMATION (CONT'D)

Before receiving IZERVAY tell your healthcare provider about all of your medical conditions including if you:

- Have a history of seeing flashes of light or small specks floating in your vision and if you have a sudden increase of size and number of these specks.

HOW DOES IZERVAY WORK?

In people with GA, a part of the immune system becomes **overactive**.



When this happens, immune system proteins in the eye start **attacking** healthy retinal cells.



Only IZERVAY blocks an immune system protein called **C5** to help protect healthy retinal cells for longer.



Feel confident in managing your GA by partnering with your retina specialist* to **start treatment today**

*Retina specialists are medical doctors highly trained in treating conditions that affect the retina.

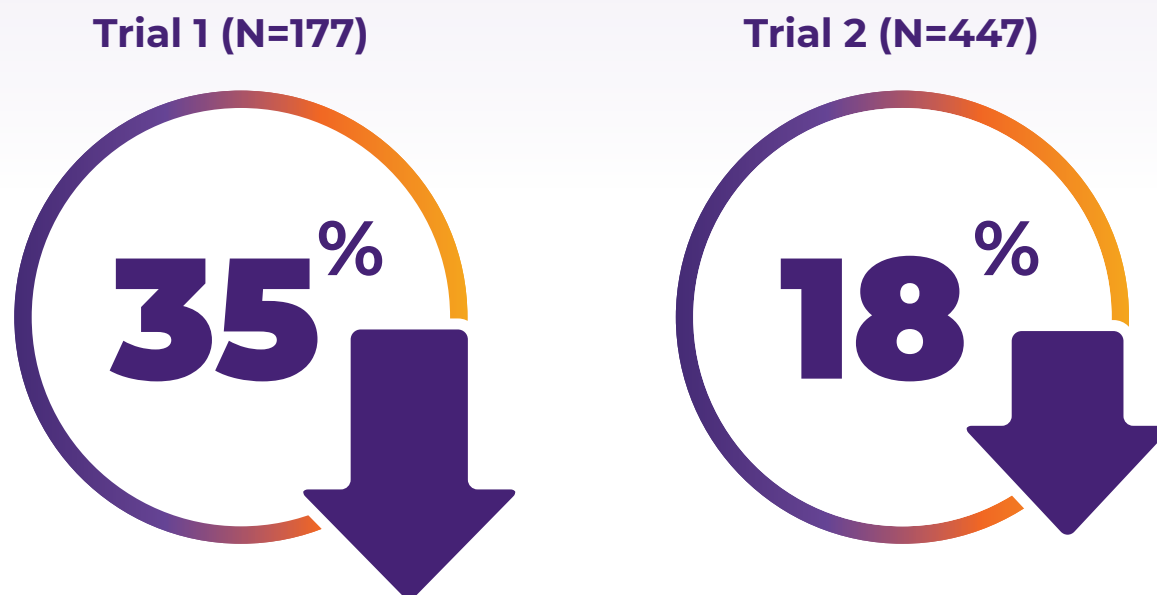
Please see **Important Safety Information** throughout this brochure. [Click here](#) for full Prescribing Information.

izervay[®]
(avacincaptad pegol
intravitreal solution) 2 mg

PROTECT HEALTHY RETINAL CELLS FOR LONGER WITH IZERVAY

IZERVAY is proven to slow GA progression, which could help preserve your vision for longer

IZERVAY significantly slowed GA progression by 18% to 35%, compared to those who were not treated, in 2 clinical trials evaluating 624 people with GA.



**Protection of healthy retinal cells
in just 1 year of treatment**

IMPORTANT SAFETY INFORMATION (CONT'D)

Before receiving IZERVAY tell your healthcare provider about all of your medical conditions including if you: (cont'd)

- Have high pressure in the eye or if you have glaucoma.
- Are pregnant or breastfeeding, think you may be pregnant, or are planning to have a baby, ask your doctor for advice before taking this medicine.
- Are taking any medications, including prescription and over-the-counter medicines, vitamins, and herbal supplements. Tell your healthcare provider about any medicine you take.

POSSIBLE SIDE EFFECTS

IZERVAY was well-tolerated in 2 clinical trials. The most common side effects include:

Blood in the white of the eye

Wet AMD

Blurred vision*

Mild corneal irritation

Increase in eye pressure

Eye pain

These are not all the possible side effects of IZERVAY. Talk to your doctor if you think you might be experiencing side effects.

*Blurred vision includes visual impairment and/or loss of sharpness or detail at a distance.

Please see Important Safety Information throughout this brochure. [Click here](#) for full Prescribing Information.


izervay[®]
(avacincaptad pegol
intravitreal solution) 2 mg

STARTING TREATMENT WITH IZERVAY

IZERVAY is an eye injection given in office by your doctor. Here is what you can expect:



Before

Your doctor will clean and numb your eye to help reduce discomfort.



During

The injection typically takes a few seconds. You may feel pressure in the eye, but, usually, little to no pain.



After

You may experience eye redness, blurry vision, or an increase in eye pressure.

It's important to follow your doctor's post-treatment care instructions and call them right away if you think you might be experiencing side effects.

Staying on treatment as recommended by your doctor is important to receive the full benefits of IZERVAY

IMPORTANT SAFETY INFORMATION (CONT'D)

What should I avoid while receiving IZERVAY?

- Your vision may be impaired after receiving an eye injection or after an eye exam. Do not drive or use machinery until your vision has recovered sufficiently.



IZERVAY MY WAY **FINANCIAL ASSISTANCE PROGRAM**

izervay *my way*SM
(avacincaptad pegol
intravitreal solution) 2 mg

**If you need help with the cost of
IZERVAY, the IZERVAY My WaySM
program may be able to help**

Our patient support program is designed to meet the unique needs of eligible patients. Whether you have commercial insurance, insurance that doesn't cover IZERVAY, are uninsured, or have government-issued insurance (such as Medicare), help may be available.

**Speak with your doctor to see if you are eligible for
the IZERVAY financial assistance program or call
1-888-C5MYWAY (1-888-256-9929)**



**Please see Important Safety Information throughout
this brochure. [Click here](#) for full Prescribing Information.**

izervay[®]
(avacincaptad pegol
intravitreal solution) 2 mg

CONNECT WITH MENTORS AND LOVED ONES



Speak directly with a patient or caregiver mentor about what to expect through IZERVAY 1-on-1 Connections.

To sign up, visit IZERVAY.com/get-a-mentor

IZERVAY 1-on-1 Connections mentors are compensated for their time.

Lean on your loved ones

Your support system may be the first to notice changes in your mental health or if you could benefit from additional support.



Find somebody that you can talk to about [GA] besides your doctor...somebody that cares about your mental health. And if you don't have anybody, find a support network."

– Jan, real GA patient

IMPORTANT SAFETY INFORMATION (CONT'D)

What are the most common side effects of IZERVAY?

- Blood in the white of the eye
- Blurred vision
- Increase in eye pressure
- Wet AMD
- Mild corneal irritation
- Eye pain

These are not all the possible side effects of IZERVAY. Tell your healthcare provider about any side effect that bothers you or that does not go away.



RESOURCES FOR PATIENTS

GA ADVOCACY AND COMMUNITY

Check out these organizations to help find support, community, and educational resources about GA



**Macular
Degeneration**

maculardegeneration.net



**Lighthouse
Guild**

lighthouseguild.org



**Prevent
Blindness**

preventblindness.org



**BrightFocus®
Foundation**

Cure in Mind. Cure in Sight.

brightfocus.org

**FOUNDATION
FIGHTING
BLINDNESS**

fightingblindness.org

Astellas is not affiliated with and does not endorse any of the listed organizations. The information provided by Astellas is for informational purposes only and is not meant to replace the advice of a healthcare professional.

Please see Important Safety Information throughout this brochure. [Click here](#) for full Prescribing Information.



CHOOSE IZERVAY TO SLOW GA, WHICH COULD HELP PRESERVE YOUR VISION FOR LONGER

Take action today so you may keep experiencing what you love for longer

Visit [**IZERVAY.com**](https://www.izervay.com)

OR

Hear from patients like you at
[**IZERVAY.com/patient-stories**](https://www.izervay.com/patient-stories)

IMPORTANT SAFETY INFORMATION (CONT'D)

Call your healthcare provider for medical advice about side effects. You are encouraged to report negative side effects of prescription drugs to the FDA. Visit www.fda.gov/medwatch, or call 1-800-FDA-1088.

What is IZERVAY?

IZERVAY is a prescription eye injection, used to treat geographic atrophy (GA), the advanced form of dry AMD.

Please see Important Safety Information throughout this brochure. [Click here](#) for full Prescribing Information.


izervay[®]
(avacincaptad pegol
intravitreal solution) 2 mg



Copyright © 2026 Astellas Pharma Inc. or its affiliates.
All trademarks are the property of their respective owners.
MAT-US-IZE-2025-00631 03/26